

CANZONA I

THE EXORCISM

WALTER ROSS

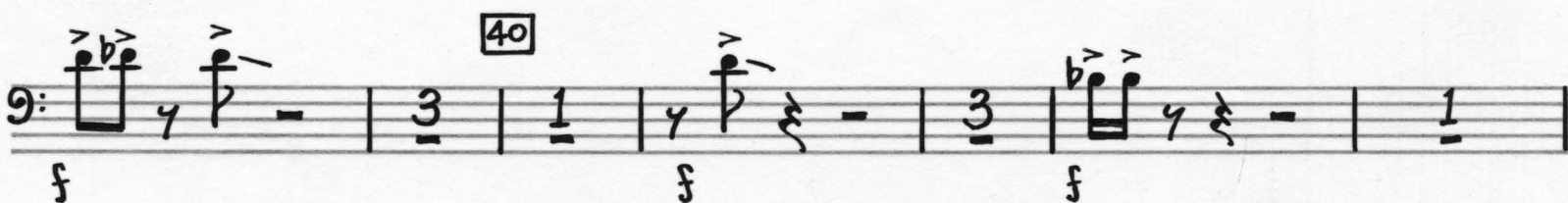
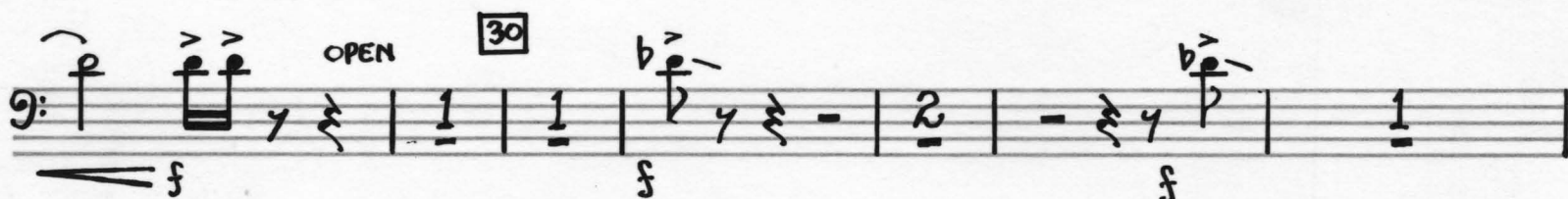
Trombone 2

TROMBONE 2
straight, harmon, and cup mute required

THE EXORCISM CANZONA I

WALTER ROSS
1969

MODERATO $\text{♩} = 72$



70

sfp \leq *f* *p* \leq *f* \geq *p* *mf* \geq *p*

80

3RD TRB.

f \leq *ff* \geq *p* *sffz* \leq *f* *p* *mf* *sffp* \leq *mp*

90

III ALLEGRO $\text{♩} = 120$ OPEN

100

BARITONE

110

120

130

Musical score for 2nd Trumpets, measures 140 to 210. The score is written in bass clef with various dynamics and articulations.

Measures 140-150: Starts with a forte (*f*) dynamic. Measure 140 includes a box containing the number 140. The music features eighth and quarter notes with accents and slurs.

Measures 150-160: Measure 150 includes a box containing the number 150. The music continues with eighth and quarter notes, some with triplets.

Measures 160-170: Measure 160 includes a box containing the number 160. The music features half and quarter notes with slurs and accents.

Measures 170-180: Measure 170 includes a box containing the number 170. The music features half and quarter notes with slurs and accents.

Measures 180-190: Measure 180 includes a box containing the number 180. The music features half and quarter notes with slurs and accents.

Measures 190-200: Measure 190 includes a box containing the number 190. The music features half and quarter notes with slurs and accents.

Measures 200-210: Measure 200 includes a box containing the number 200. The music features half and quarter notes with slurs and accents.

Measures 210-220: Measure 210 includes a box containing the number 210. The music features half and quarter notes with slurs and accents.

Performance Instructions:

- CUP MUTE**: Indicated above measures 180 and 190.
- Rit.**: Ritardando, indicated above measure 180.
- MODERATO**: Indicated above measure 180.
- HORN**: Indicated above measure 190.
- (MUTE)**: Indicated above measures 190 and 200.
- HARMON MUTE**: Indicated above measure 200.

Dynamics: *f* (forte), *mf* (mezzo-forte), *pp* (pianissimo), *ff* (fortissimo).

Articulations: Accents, slurs, triplets, and various rests.

ff mf ff mf ff p

220 230 RIT. V ALLEGRO $\text{J} = 120$

sfz p

240

250

260

270

280

290 PESANTE $\text{J} = 72$

300

310 OPEN

mf pp ff p pp

2ND - TRANSVERSE

J = 132

J = 132

320

KING BRAND
1595 B'WAY, N. Y.