

WALTER ROSS

TROMBONE TRIO

Bass Trombone

Bass Trombone

I

Allegro con spirito $\text{♩} = 120$

f

10 1

ff *mf*

f *sub. p*

20

mf *f* *mf* *p*

poco rit. *a tempo*

30

mf *p* *pp* *p*

40

50

1

mf *sf*

sf *mf* *sf* *mf*

60

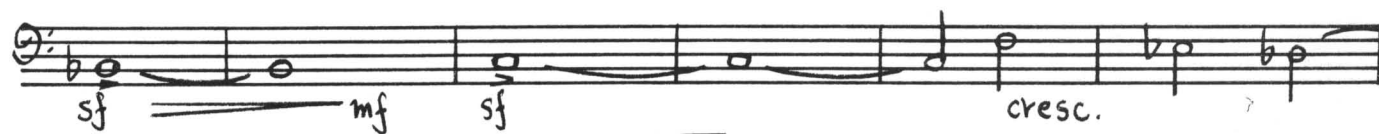
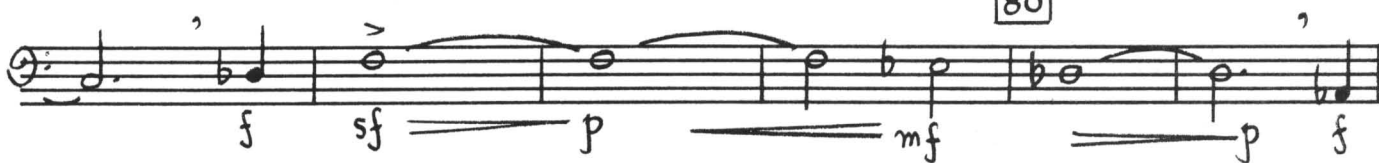
capriccioso



70



80



90



100



4

V.S.

Handwritten musical score for a piece in G-flat major, measures 110-150. The score is written on ten staves in bass clef. It includes various musical notations such as notes, rests, beams, and dynamic markings (p, f, mf, ff, cresc.). Measure numbers 110, 120, 130, 140, and 150 are boxed. A first ending bracket is present at the end of measure 120.

160



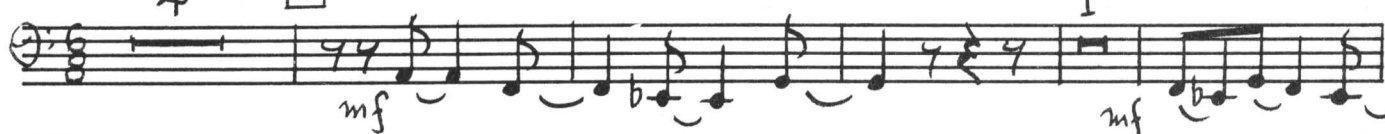
170



II

Blusey J. = 54
4

5

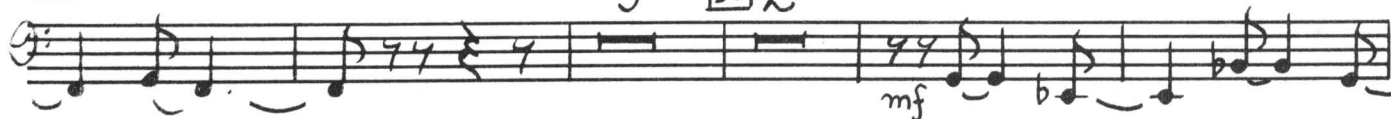


10

3

15

2



20



25



30



35

p mp p f

40 45 5

50 55

mf f

60 2

ff f mf

p Animato $\text{♩} = 96$ pp

III

2 3 4

p cresc.

10 mf cresc... f

2 20 10 30 tenor 8 40 5

50

mf

60 1

f mf p

70

mp mf (mf)

80

p mf

90

f

7 100

f

110

mf p

120

pp

rit. 130

atempo 4

Detailed description: This is a bass line musical score spanning measures 60 to 130. The music is written in bass clef with a key signature of two flats (B-flat and E-flat). Measure 60 starts with a forte (f) dynamic, followed by a mezzo-forte (mf) section, and ends with a piano (p) dynamic. Measure 70 begins with mezzo-piano (mp), moves to mezzo-forte (mf), and includes a mezzo-forte in parentheses ((mf)). Measure 80 features a piano (p) dynamic followed by mezzo-forte (mf). Measure 90 is marked with a forte (f) dynamic. Measure 100 includes a fermata over a whole note and is marked with a forte (f) dynamic. Measure 110 continues with a mezzo-forte (mf) dynamic, which then transitions to piano (p) by measure 120. Measure 120 is marked with piano-piano (pp) dynamics. Measure 130 begins with a 'rit.' (ritardando) marking, followed by a '130' measure number, and concludes with an 'atempo' (ad libitum) marking and a 4-measure rest.

Handwritten musical score for Bass, measures 140-180. The score is written on a single staff in bass clef, with a key signature of one flat (B-flat). The time signature is 4/4. The music features a variety of rhythmic patterns, including eighth and sixteenth notes, and rests. Dynamics are indicated by letters (p, mf, f, cresc., ff, fff) and slurs. Measure numbers 140, 150, 160, 170, and 180 are boxed. A tempo marking '♩ = ♩ sempre' is present. The score ends with a double bar line.

140

p

mf

f

150

1

1

mf

160

f

170

p

cresc...

... mp

♩ = ♩ sempre

cresc...

... mf

cresc...

180

f

cresc...

ff

cresc...

... fff