

TUBA DUOS

Walter Ross

Tuba 1

Allegro leggiero d=108

I
TOCCATA

Tuba I

mp

10 3 mf

(A) 20

30 (B) 7 f

2 mf

40 (C) 2 mp

50 cresc. f

(D) 60

5

70 2

(E) (F) 80 3 1

mf

[90]

[G]

1 [100] 1

f

[H] poco molto mosso
[110] d = 120

f

f

ff

II CAVATINA

Andante cantabile d = 72

4 piano 4

[10]

mf

6

l'istesso tempo
d = 72 2 leggero

p

p

1 [30] 1

2. mf

40

2

mf

2

listesso tempo
♩ = 72 4 piano 3

50

mp

1

p

mp

p

III BADINAGE

Capriccioso ♩ = 90

4

mf

10

A

4

mf

20

B

1

mf

1

mf

30

C

3

40

mf

1

50

3

2

3. f

D

Handwritten musical score for 'The Rose Tree' in bass clef. The score is divided into measures with measure numbers 60, 70, and 80 marked in boxes. The music includes various notes, rests, and dynamics such as *mf*, *mp*, *sfz*, *f*, and *ff*. Fingerings (1, 2, 5) are indicated above certain notes. The key signature has two flats (B-flat and E-flat).

IV
BERCEUSE

Adagietto con grazia $\text{♩} = 48$

Adagietto con grazia $\text{♩.} = 48$

7 10 2 mp mp

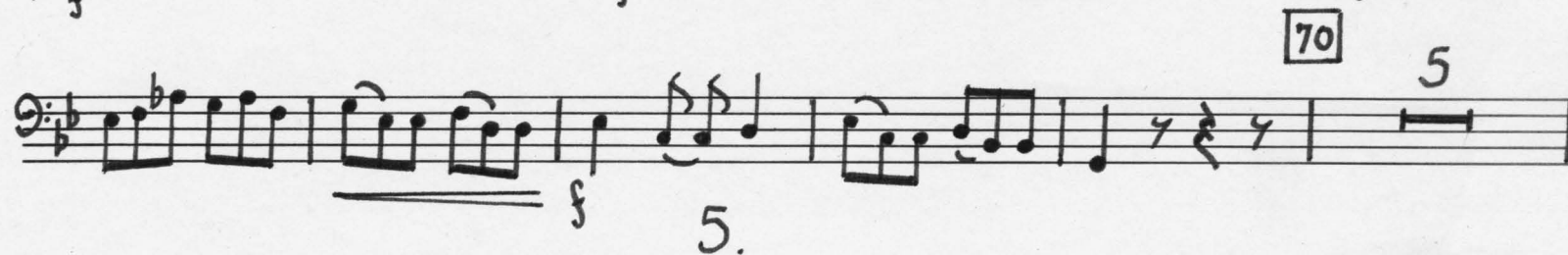
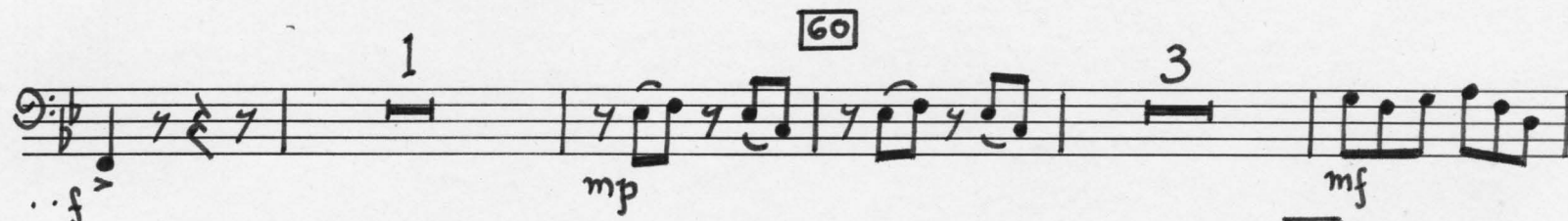
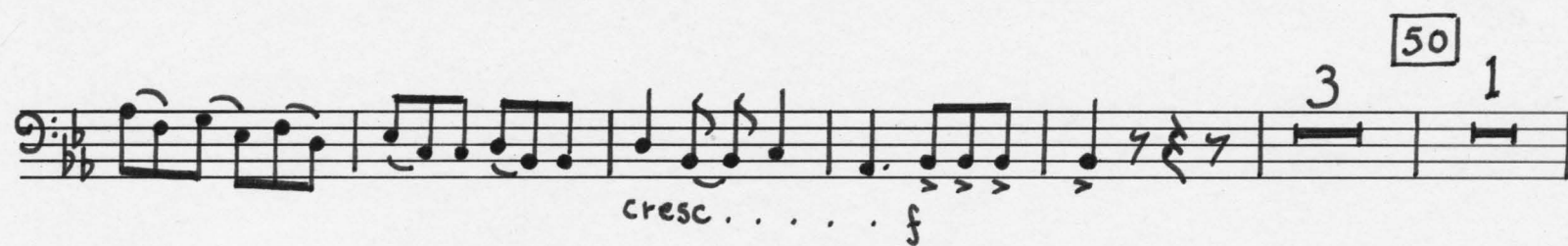
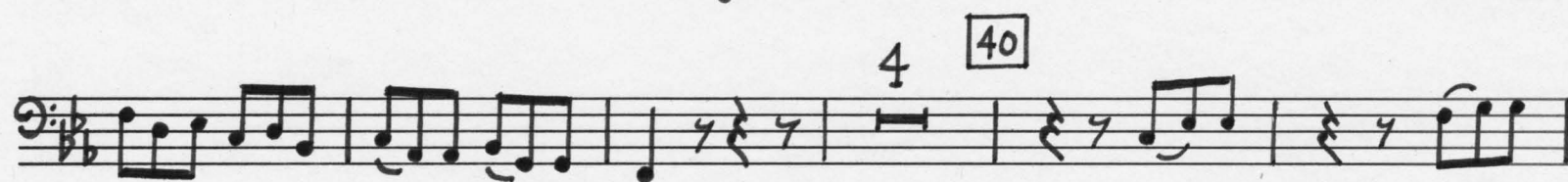
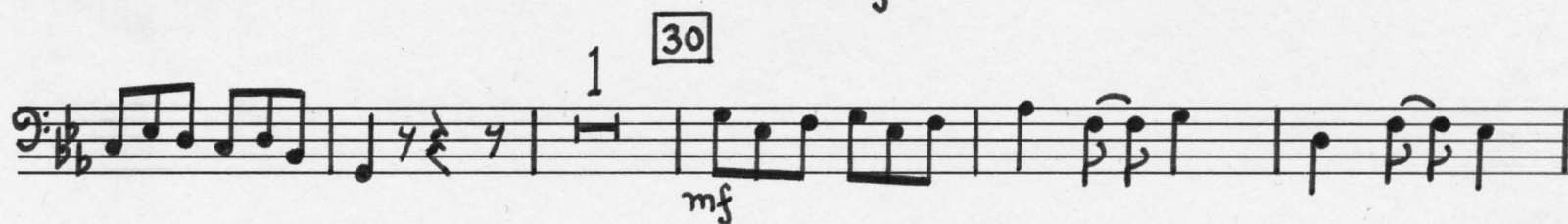
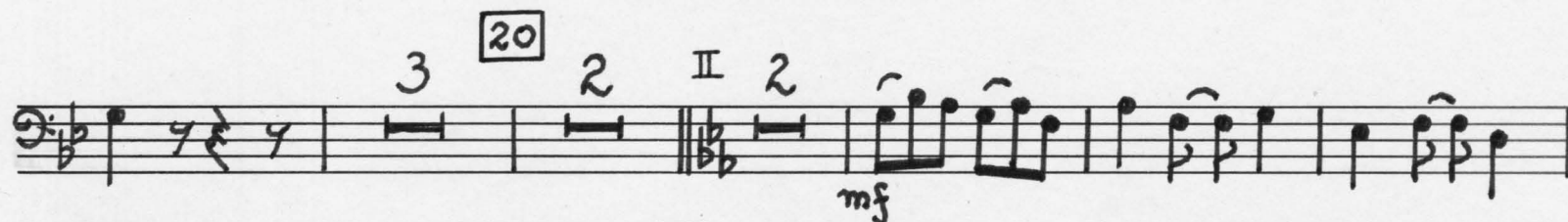
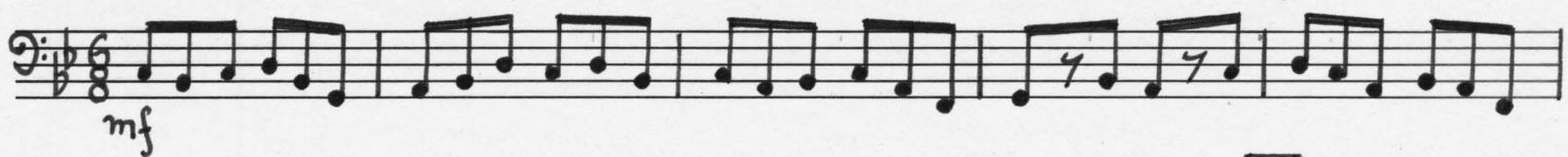
1 7 mf

20 6 30 1

mp rit. 4. pp

Allegro fantastico $\text{♩} = 90$

V
TARANTELLA



II 1 80

f

4

f

90

cresc. *ff*