

DUOLOGUES III

for Flute and Oboe

Walter Ross
2003

Flute

I
INTRADA

leggeiro

©Walter Ross, 2003

Flute

2.

73 *mf* *mf* *f*

80 *mp* *mf* *p* *mp*

88 *cresc.* *f*

95 *sffz* *p* *mf*

102 *mf* *mf* *f*

109 *mf* *mf*

115 *f* *cresc.* *ff*

accel. [D] Tempo 1^o d = 108

II

Andante gentile d. = 60 (in 1) SERENATA

5 *mf* *f*

12 *mf* *mf* *p*

[A] 5

3. B

23 *mf*

Handwritten musical notation for measures 23-30. The staff is in treble clef with a key signature of one flat. It features a series of eighth and sixteenth notes, mostly beamed together in groups of four. A dynamic marking of *mf* is present at the beginning. A double bar line is at the end of the staff.

C

31 *mp* *p* *p* *pp*

Handwritten musical notation for measures 31-38. The staff continues with beamed eighth and sixteenth notes. A dynamic marking of *mp* is at the start, followed by *p* and *pp* markings. A key signature change to two flats occurs between measures 34 and 35. A double bar line is at the end of the staff.

4

39 *mp*

Handwritten musical notation for measures 39-46. The staff continues with beamed eighth and sixteenth notes. A dynamic marking of *mp* is at the start. A double bar line is at the end of the staff.

D

50 *mp*

Handwritten musical notation for measures 50-57. The staff continues with beamed eighth and sixteenth notes. A dynamic marking of *mp* is at the start. A double bar line is at the end of the staff.

58 *mp*

Handwritten musical notation for measures 58-65. The staff continues with beamed eighth and sixteenth notes. A dynamic marking of *mp* is at the start. A double bar line is at the end of the staff.

E

66 *p* *mf*

Handwritten musical notation for measures 66-73. The staff continues with beamed eighth and sixteenth notes. A dynamic marking of *p* is at the start, followed by *mf*. A double bar line is at the end of the staff.

76 *pp* *mp*

Handwritten musical notation for measures 76-83. The staff continues with beamed eighth and sixteenth notes. A dynamic marking of *pp* is at the start, followed by *mp*. A double bar line is at the end of the staff.

86 *p* *mp*

Handwritten musical notation for measures 86-93. The staff continues with beamed eighth and sixteenth notes. A dynamic marking of *p* is at the start, followed by *mp*. A double bar line is at the end of the staff.

F

95 *mf* *p*

Handwritten musical notation for measures 95-102. The staff continues with beamed eighth and sixteenth notes. A dynamic marking of *mf* is at the start, followed by *p*. A double bar line is at the end of the staff.

4

104 *mf* *f* *mf*

Handwritten musical notation for measures 104-111. The staff continues with beamed eighth and sixteenth notes. A dynamic marking of *mf* is at the start, followed by *f* and *mf*. A double bar line is at the end of the staff.

115 *mf* *p*

124 *mf*

132 *mf* *p* rit. . . .

III

Allegretto fantastico $\text{♩} = 108$

ARABESQUE

2 *mf*

7 *p*

12 *mf* [A]

17 1

21 *p* 2

17 

21 

25 

29 

V

GALOP

Allegro festivo $\text{♩} = 108$

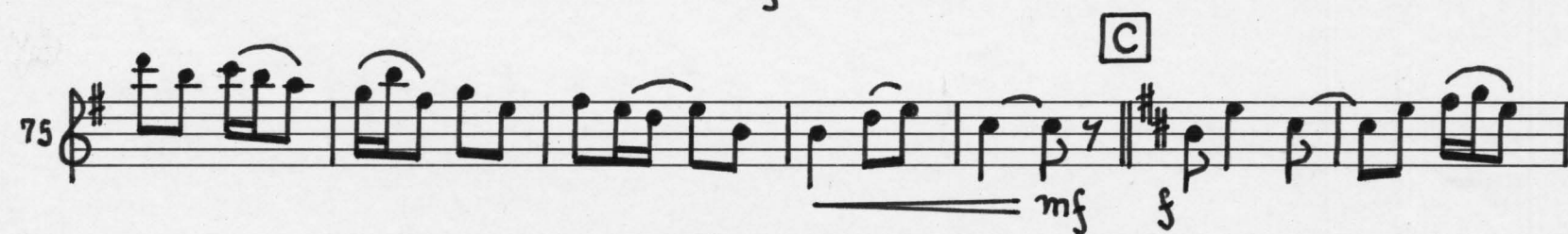


7 

14 


20 

26 



88 

95 

101 

107 