

# DUOLOGUES VIII

suite for

OBOE and HORN

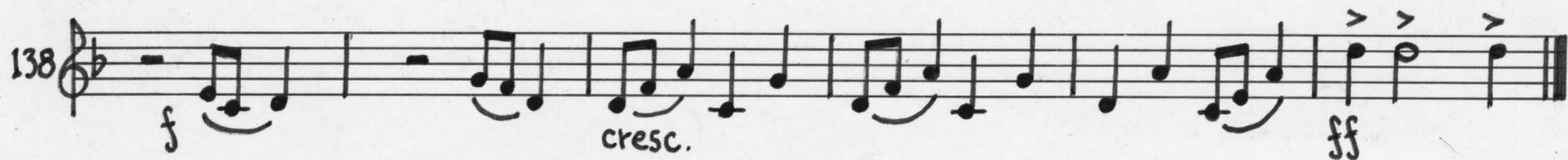
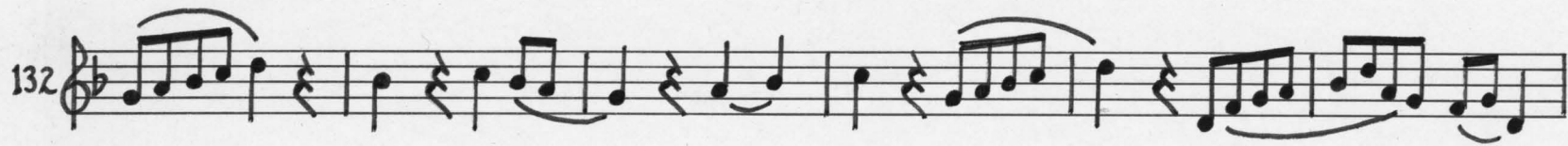
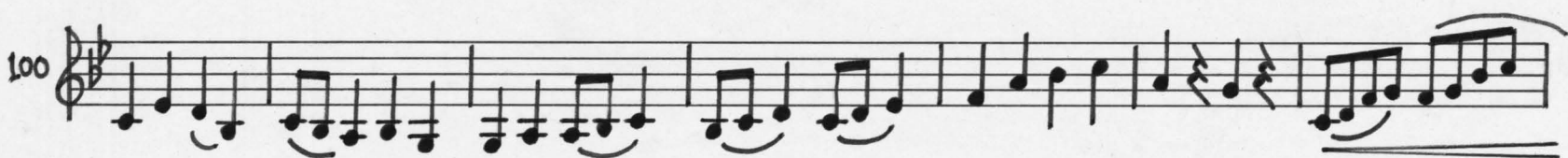
Walter Ross  
2004

**F Horn**

Allegro animato  $\text{♩} = 108$

I  
INTRADA

Handwritten musical score for "INTRADA" by Walter Ross, 2004. The score is in 2/4 time, key of B-flat major, and consists of 74 measures. The tempo is marked "Allegro animato" with a quarter note equal to 108 beats per minute. The score is written on a single staff with a treble clef and a key signature of two flats. The dynamics range from *f* (forte) to *sub. mf* (subito mezzo-forte). The score includes various musical notations such as slurs, ties, and fingerings (1, 2, 3). The piece begins with a *f* dynamic and a *sub. mf* dynamic. The score is divided into measures by bar lines, with measure numbers 8, 15, 22, 29, 36, 43, 50, 59, and 67 indicated at the start of their respective lines. The piece concludes with a final measure marked with a double bar line.





3. Lento con grazia  $\text{♩} = 48$  (in 1)

II  
BERCEUSE

Handwritten musical score for a piece titled "3. Lento con grazia  $\text{♩} = 48$  (in 1)" and "II BERCEUSE". The score is written on a single staff with a key signature of one sharp (F#) and a 3/4 time signature. The tempo is "Lento con grazia" and the metronome marking is  $\text{♩} = 48$  (in 1). The score includes various dynamics (mp, mf, p, pp, open) and articulations (muted, open strings, fingerings). The score is divided into measures, with measure numbers 10, 19, 28, 40, 55, 66, 75, 86, and 102 marked at the beginning of their respective lines.

The score consists of the following measures and markings:

- Measures 1-9: *mute*, *mp*, *mf*
- Measures 10-18: *mf*, *p*, *mp*
- Measures 19-27: *mf*
- Measures 28-37: *p*, *mf*, *open*, *3*, *open*
- Measures 38-47: *p*, *mf*, *6*
- Measures 48-54: *mf*, *2*
- Measures 55-65: *mp*, *(s)*
- Measures 66-74: *p*, *mp*
- Measures 75-85: *mute*, *6*, *mute*, *mf*, *p*
- Measures 86-101: *mp*, *mf*, *mf*, *mp*, *p*, *open*, *pp*

Allgramente  $\text{♩} = 108$

III  
BURLESKE

4.

pp — mf

9

19

26

33

41

48

55

62

69

lyrico

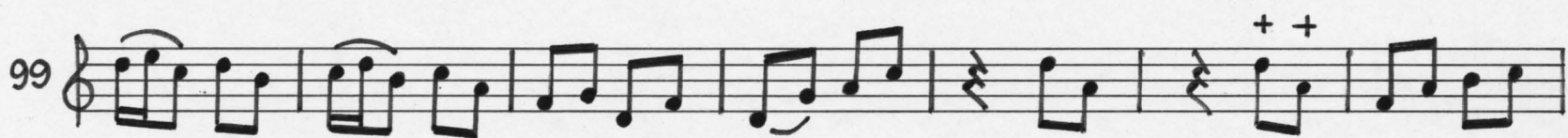
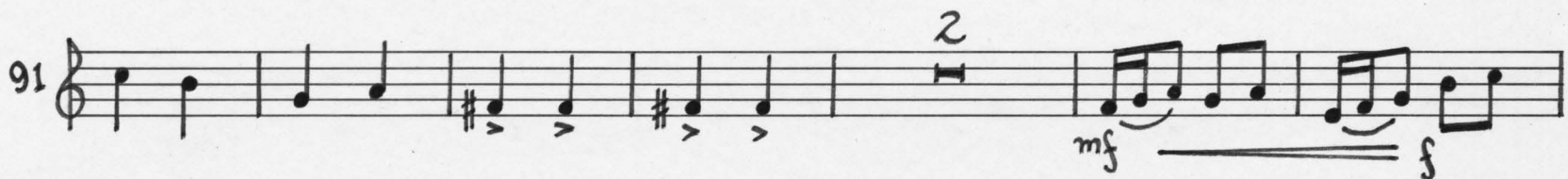
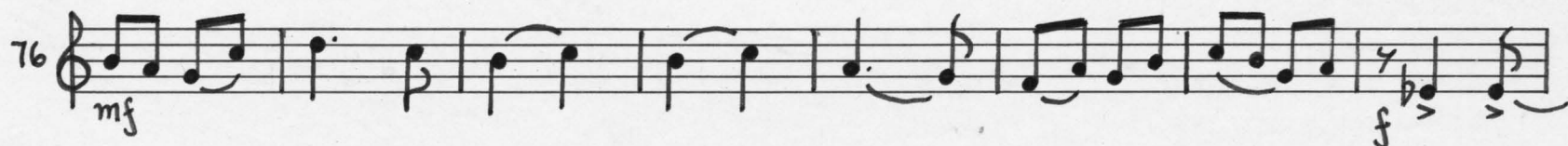
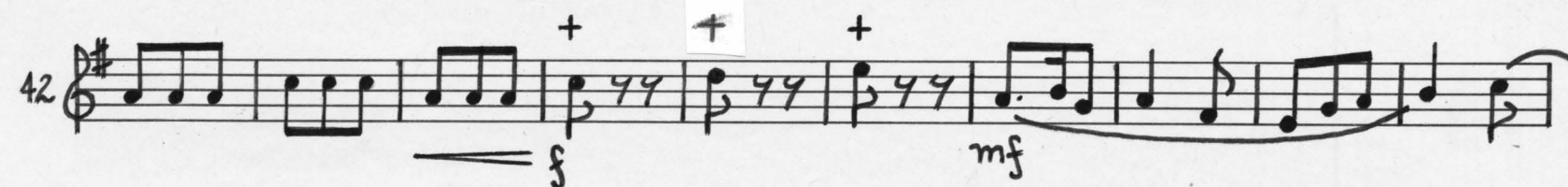
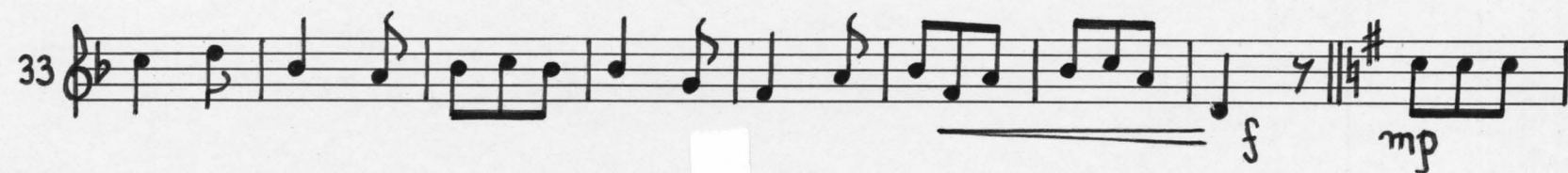
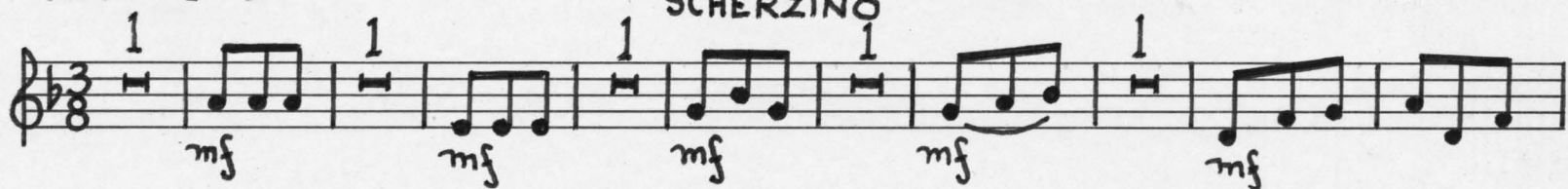
allegramente di nuovo

pp

V.S.



5.

Festivo  $\text{♩} = 90$ IV  
SCHERZINO

52 

62 

74 

83 

93 

102 

112 

123 

132 