

WIND QUINTET Nº 2

for
flute, oboe, B^b clarinet, F horn and bassoon

WALTER ROSS

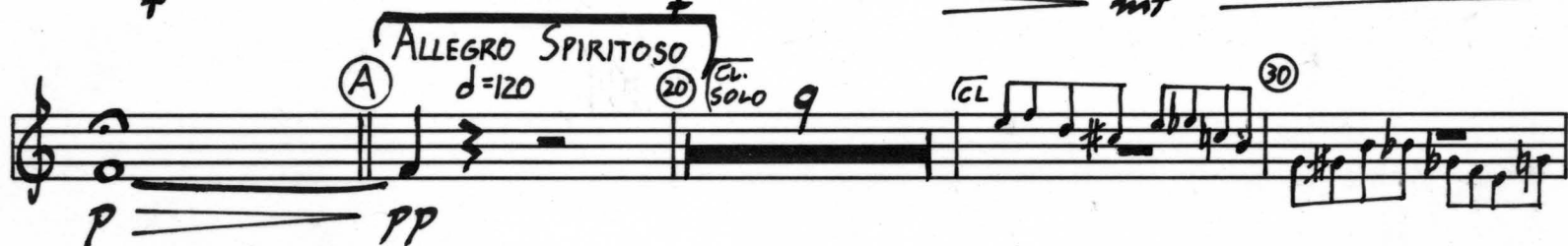
F Horn

WIND QUINTET Nº2

I. INTRADA - CAPRICCIO

WALTER ROSS

(DECISO $\text{♩} = 60$)



(F HORN)

50 3 MUTE *mf* (D) OB. SOLO

60

OPEN 2 (E) ENS. 4 (70) OPEN *p* *mp*

(F) 5 *f*

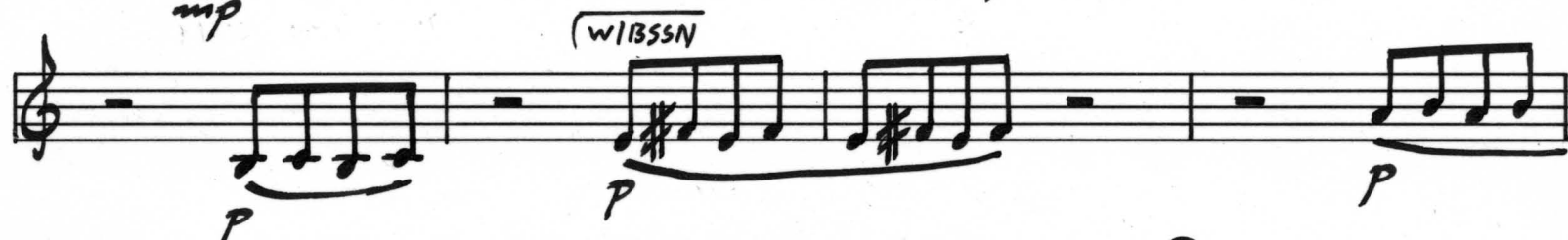
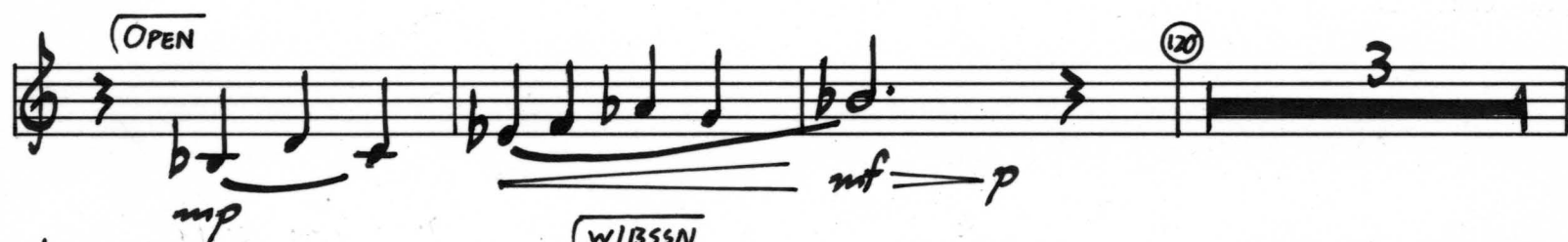
80 MUTE 2 (Solo) *sfp* (G) POLO MENO MOSO *mf* $d=108$

90 *p* *mf*

(H) 7 (100) 2 (CL+BSSN.) (MUTE (W/PL)) *p*

MUTE *p*

F HORN

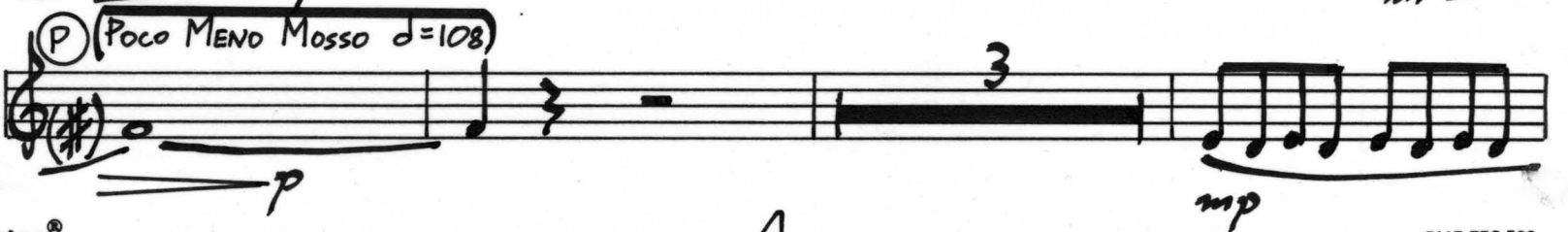
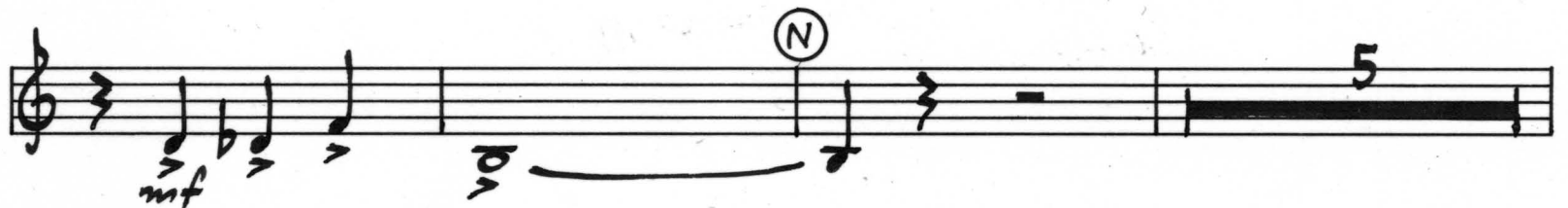


F HORN

w/BSSN
SOLO

(M)

(170)



F HORN

1 220 3 W/FL. p

p

230 Q

1 W/FL. mp

1

240 9 CL 250 p

R 3 Solo f

260

mf P

(Poco Rit.) S SUBITO ALLEGRO $\text{♩} = 120$ 270 Cl. Solo 6

pp

F HORN

Handwritten musical score for F Horn, measures 280-320.

Measures 280-289: *mf* (mezzo-forte). Includes a *CL* (Clarinet) marking and a *T* (Tutti) marking.

Measures 290-299: *f* (forte). Includes a *Solo* marking and a *W/FL+OB* (With Flute and Oboe) marking.

Measures 300-309: *f* (forte). Includes a *MUTE* marking and a *FL+CL* (Flute and Clarinet) marking.

Measures 310-319: *p* (piano) to *mp* (mezzo-piano). Includes a *MUTE* marking and a *OB. SOLO* (Oboe Solo) marking.

Measures 320-329: *f* (forte). Includes a *OPEN* marking and a *BSSN* (Bassoon) marking.

Measures 330-339: *Tutti* marking.

Measures 340-349: *Tutti* marking.

II. ALLELUIA VARIATIONS

(ANDANTE $\text{♩} = 72$)

F HORN

Solo

mp — *mf* — *mp* — *mp*

2

mp — *mf* — *mp* — *mf*

(A)

5

p

OB. Solo

(B)

p

(w/cl. BSSN)

mf — *p* — *mp* — *mf*

(w/cl. BSSN)

4

mp — *p* — *mp* — *mf*

(MISTERIOSO)

1

mp — *p* — *mp* — *mp*

(C)

30

35

mp

40

(w/cl.)

mp

1

(SIMILE)

45

mp

1

F HORN

Handwritten musical score for F Horn, featuring ten staves of music with various performance instructions and dynamics.

Staff 1: *mp* **SIMILE** (50)

Staff 2: **3** (55) **D** *mp* **SIMILE** *w/CL, BSSN*

Staff 3: **MUTE** **2**

Staff 4: (60) **FL. SOLO** **3** **(FL. 8va)** **MUTE** *mp*

Staff 5: (65) **OPEN** **E** **4** (70) **1** *p*

Staff 6: **BSSN. SOLO** *mf*

Staff 7: (75) **2**

Staff 8: **F** **2** (80) **5** (85) **2** **FL, CL + OB.**

Staff 9: (90) **OPEN** **MUTE** **2** **MUTE (Solo)** *mp* *mf*

Staff 10: *mp* *p* *pp*

III. BURLETTA

(COMODO $\text{♩} = 90$)

F HORN (OPEN) 1. 2. 3. 4.

mf

5. 6. 7. 8.

9. 10. 11.

(A) 4

20 2 (FL. (BVA) $\text{♩} \text{♩} \text{♩}$ # $\text{♩} \text{♩} \text{♩}$) (B) w/BSSN *mf*

(+CL.)

30 (C) 9 40 5

(D) ENS. UNISON

F HORN

(Solo)
f
 50
 1
f

E *CL. + HRN* 3 *FL. + BSSN* 1 60 1

F *Solo*
mp *mf*

(MUTE) 3 *(MUTE)* *Solo* 70 6
f *mf*

2 *Solo* *mf*

(RIT) 1 *(H)* *A TEMPO* 2 80 8 *CL.* 7
mf

90 *mp* *mp*

100 *sub* *f* 4 110 *+ BSSN* 3

1 *f* 1 *f* *ff*

IV, SALTARELLO

(CON SPIRITO $\text{♩} = 96$)

F HORN

9

(10) FL, OB + CL (8VA)

(A) w/BSN

f

(9) + CL.

20

mp

5

(30)

mp

(C) w/FL

1.

2.

3.

4.

(40)

mp

(Tutti)

f

2

2

F HORN

P = Piu Mosso $\text{♩} = 144$

(D) BSSN f

(50) $+CL.$ mf

(60)

(E) $(FL+OB.)$ $(MUTE)$ 6

(70) 2 $+CL$ 8 (80) CL

(F) $(MUTE) w/FL$ mf

(90)

$(OB. CL. + BSSN.)$ $(OPEN)$

(100) 2 3 $(BSSN (8VA LOWER))$ (G) $w/CL. + BSSN$ f

F HORN

Handwritten musical score for F Horn, measures 110-142. The score is written on ten staves. It includes various musical notations such as eighth notes, quarter notes, and rests. Key markings include 'TUTTI' at measure 110, 'w/ll' at measure 114, 'TEMPO 1º J. = 96' at measure 120, and '(BSSN SOLO)' at measure 121. Dynamics like 'f' and 'mf' are indicated. The piece concludes with a double bar line at measure 142.

F HORN

(Solo)

mf *f* *mf*

1

150

f

1

160

mp

3

170 *1* *K* *4*

p

(F BSSN) *2*

(W/CL+BSSN) *mf*

180

3

p

(L) POLO A POLO ACCEL. *2* *190* *1*

(J. = 120 (FL+OB.)) *6* *1*

mf

(M) Tutti *mf cresc.*

F HORN

200

(J=J)

f

(Solo)

sub. mp

2

mf

1

210

1

f

p

f

cresc.

(J=J)

(Tutti)

ff

220

(J=J)

f

(ACCEL. AL FINE)

ff

230

fff