

# VIOLIN CONCERTO

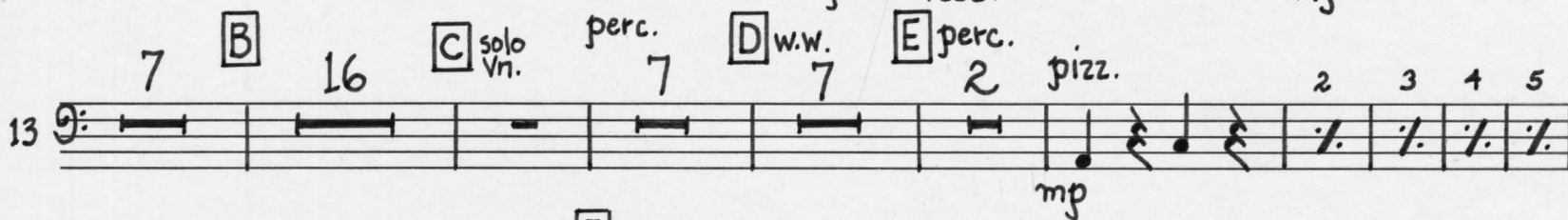
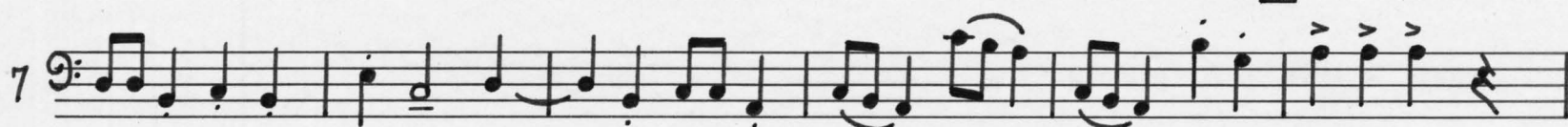
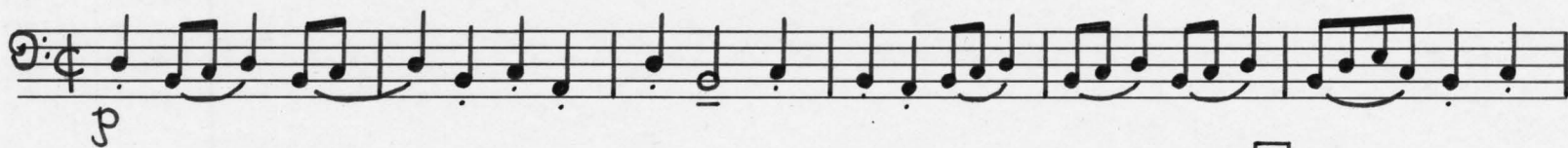
Walter Ross

**Bass**

Allegro animato  $\text{♩} = 108$

I

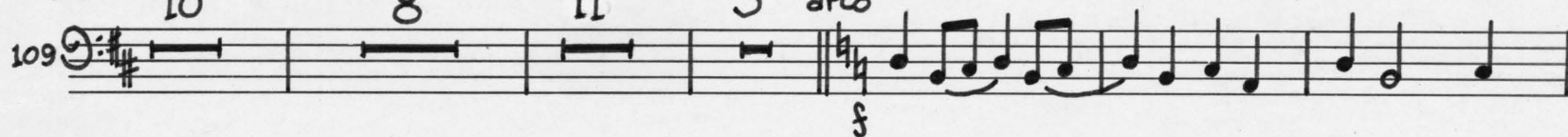
Bass



[G] meno mosso  $\text{♩} = 72$   
pizz.

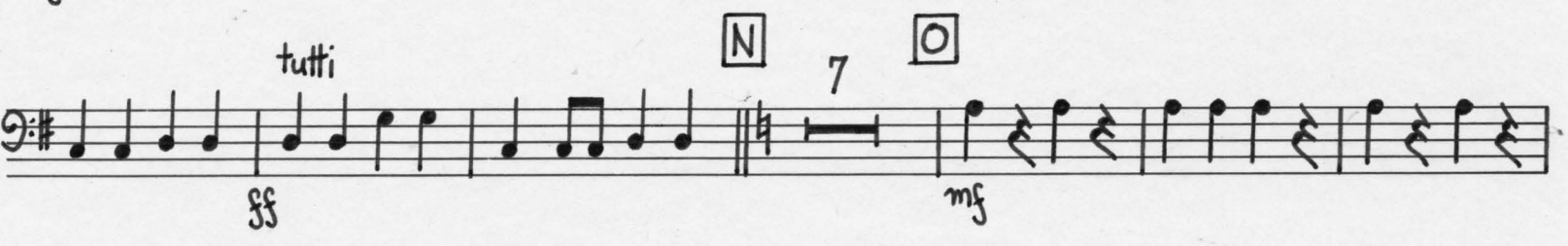


[I] strings 10 solo Vn. solo cello 8 [J] w.w. 11 accel... [K] Tempo 1<sup>o</sup> arco



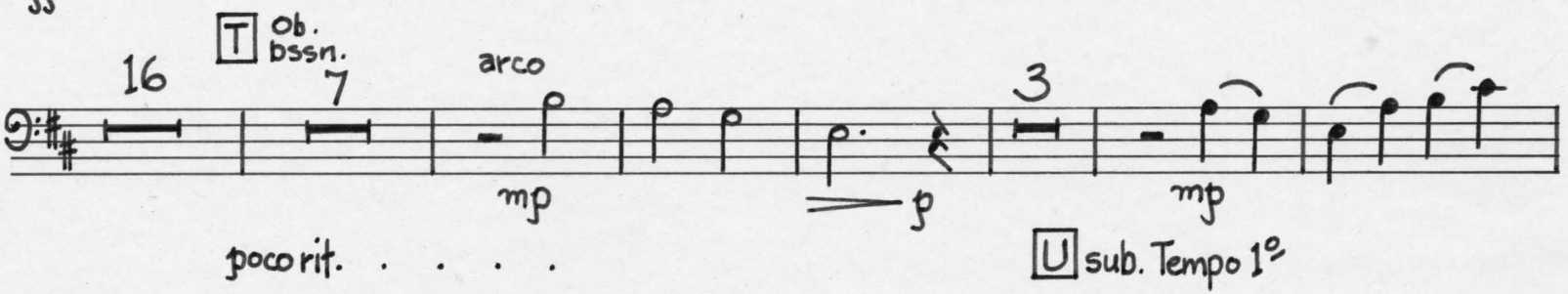
2. M  
solo  
pizz.

110 

177 

190 


197 

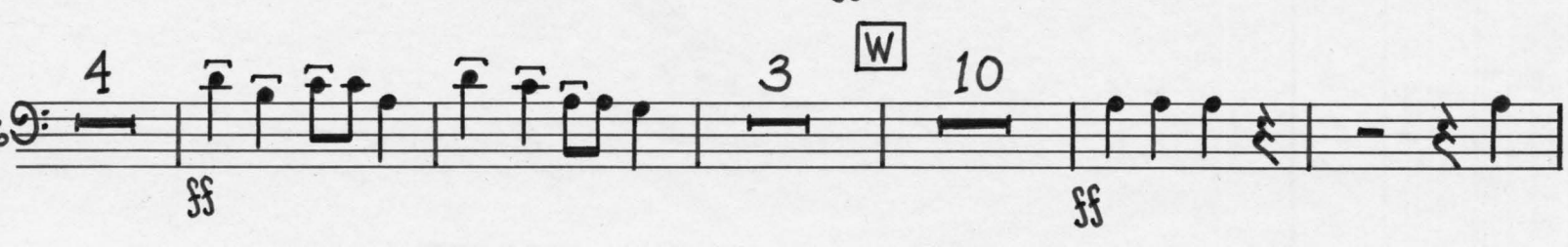
231 

262 

270 

279 

287 

296 

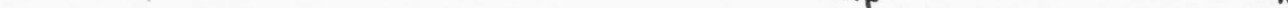
poco rubato    ☒ tempo giusto  
13    W.W. 2 pizz.

13

W.W.

2

pizz.

317 

337

344  *mf* *pizz.*

351 

poco rubato **AA** tempo giusto

18

363

arco

3

strings

*f* *f* *ff*

## II

Lento grazioso ♩ = 60

5

'cellos

pizz.

2

7

pizz. solo


mf

mp

A

B

This block shows a handwritten musical score for cello, measures 5 through 11. The tempo is marked 'Lento grazioso' with a quarter note equal to 60 beats. The key signature has one sharp (F#) and the time signature is 4/4. Measure 5 contains a whole rest. Measure 6 has a half note G4 and a half note F#4, both marked 'cellos'. Measure 7 has a half note E4 and a half note D4, both marked 'cellos'. Measure 8 has a half note C4 and a half note B3, both marked 'cellos'. Measure 9 has a half note A3 and a half note G3, both marked 'cellos'. Measure 10 has a half note F#3 and a half note E3, both marked 'cellos'. Measure 11 has a half note D3 and a half note C3, both marked 'cellos'. The dynamics are marked 'mf' at the beginning of measure 7 and 'mp' at the beginning of measure 10. There are two boxed letters, 'A' and 'B', above the staff. 'A' is above measure 9 and 'B' is above measure 11. The word 'pizz.' is written above measure 8, and 'pizz. solo' is written above measure 10. The number '5' is written above measure 5, '2' is written above measure 9, and '7' is written above measure 10.

20 

43 *tutti* *arco* **F** *mf* *mp* *p* 2 *poco rit.*



4. **G** meno mosso  $\text{♩} = 48$  (in 1)  
pizz.


51 

60 

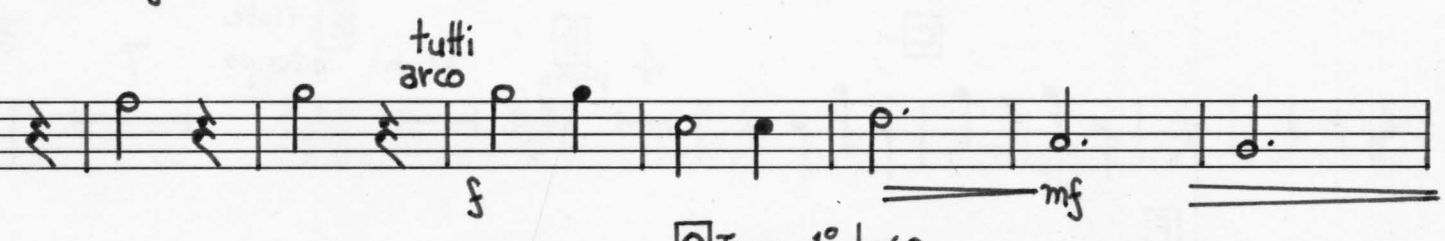
75 

83 

93 

110 

132 

143 

151 

Allegro burlando  $\text{♩} = 120$   
au talon

94 10 pizz. 5 4 str. A piano perc. solo Vn. B solo str. 12 10

56 arco 4 C 15 D brass perc. E 7

87 4

94 F 10 G perc. piano 15 muted brass 7 H pizz. mf

135 I 6 J brass 8 Fl. solo Vn. 7

161 rit. poco a poco K  $\text{♩} = 60$  grazioso L W.W. 8 piano solo Vn. 10 M Vn. I 10 Oboe 7 p

215 N 10

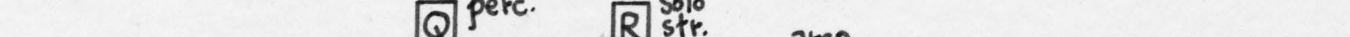
233 O sub. Tempo 1<sup>o</sup>  $\text{♩} = 120$

241 6 4

6.

**P** pizz.

254

263 

294

[illegible]

315 **T** tutti arco 5 2

[illegible]

345 

366 