

OBOE D'AMORE CONCERTO

Walter Ross
1998

Violin 2

I

Violin II

Grazioso $\text{♩} = 72$

mf

7

A

f

mf

14

mf

p

mp

27

mf

cresc.

f

C

34

poco rit. D Allegro scherzando subito più mosso $\text{♩} = 112$

mf

mp

42

mp

poco

E

pizz.

57

f

64

arco

f

F

71

mf

solo

tutti

G

79

sub.f

V.S.P.D.Q.

88 *pizz.* 1

96 *rit. poco a poco* **H** *Affettuoso* $\text{♩} = 76$ 5 4 2

113 **I** 6 **J** 2

128 **K** 11 **L**

135

154

161 *rit. a tempo accel.* 3 = 4 **M** *Allegro scherzando* $\text{♩} = 108$ *mf*

173 *pizz.*

179

185 1 *pizz.* *mf*

191 *solo arco*
mf

197

202 *tutti arco*
sub. f

208 *pizz.*
f

215 *accel... più mosso* $\text{♩} = 112$
arco
f

222

228 *off*
mf

236 *f*

242 2 3 4 5
mf

250 2 3 4 5 6
V.S.

Q

Handwritten musical score for 'The Rose Tree' in G major, measures 256-274. The score is written on four staves in treble clef with a key signature of one sharp (F#). The notation includes various musical symbols such as notes, rests, slurs, and dynamic markings.

- Measure 256:** Starts with a treble clef and a key signature of one sharp. The melody consists of eighth and quarter notes, with some notes beamed together. There are slurs under some groups of notes.
- Measure 262:** Continues the melody with similar rhythmic patterns, including eighth and quarter notes.
- Measure 268:** Features a more complex melodic line with slurs and a triplet of eighth notes marked with a '3' below them.
- Measure 274:** Ends with a final cadence, including a double bar line and a fermata. There is a '1' above the staff and a 'ff' (fortissimo) marking below the staff.

II

Andante amabile ♩=60

[illegible]

Handwritten musical score for a piece in D major, measures 36 to 121. The score is written on ten staves. It includes various musical notations such as notes, rests, and dynamic markings (p, mf, mp, f, pp). There are also performance instructions like 'tutti', 'poco rit.', 'a tempo', 'div.', and 'rit.'. The score is divided into sections labeled E, F, G, H, and I. The key signature is D major (two sharps). The time signature is 4/4. The piece ends with a double bar line and a key signature change to D major.

Handwritten musical score for "The Rose Tree" in G major, 4/4 time. The score consists of four staves. The first staff starts at measure 128 and ends with a double bar line. The second staff starts at measure 134 and includes a first ending bracket labeled 'K' and a second ending bracket labeled 'L'. The third staff starts at measure 144 and includes a third ending bracket labeled 'M'. The fourth staff starts at measure 151 and ends with a double bar line. The music features various dynamics (mp, f, p, mf, pp) and articulations (accents, slurs).

III

Allegro animato ♩. = 90 (in 1)

off sempre

p

10

mf *f*

[A] 1 pizz.

19

mf

29

2 arco

mf

[B]

40

11

off sempre

p

60 *mp* *mf* *f* **C** 1

69

78 *pizz.* *mf* **D** 3

88 *mf*

100 *f* 3 *arco* *mf*

112

122 **E** 13 *cresc.* *f* *mp* **F** subito più mosso *off*

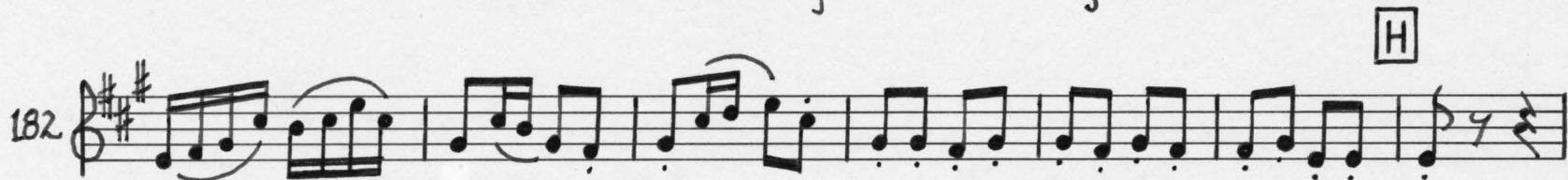
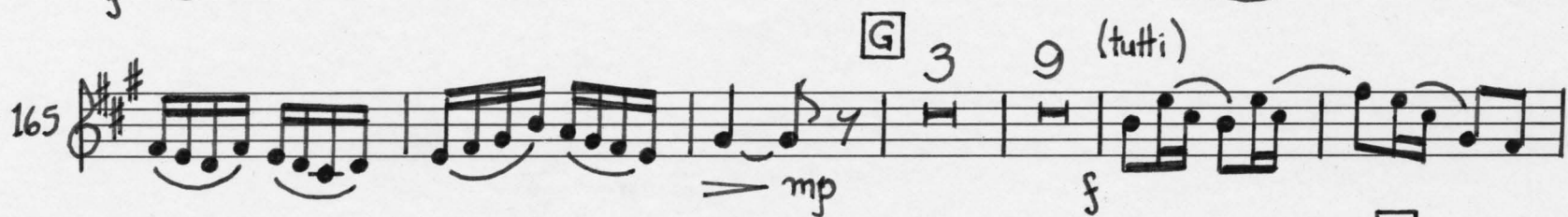
143 *mf* *f*

150

155 1

V.S.

solo



pizz.

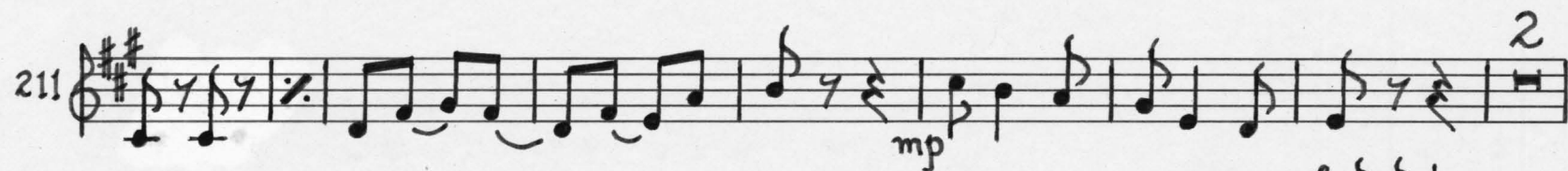
1

arco

sempre



I

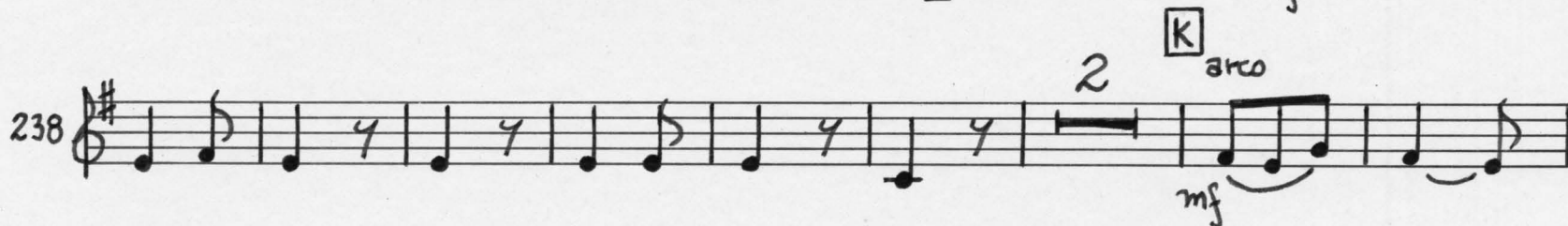
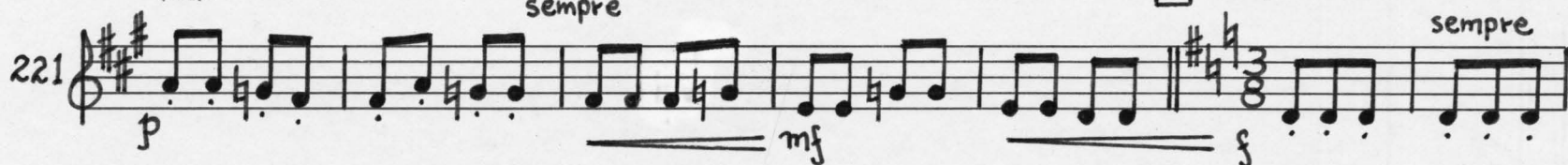


tutti

sempre

J Tempo 1^o ♩ = 80

sempre



248 *cresc.* *f* *L*

257 *mf* *mp* *p* 11 *off* *sempre* *p*

276 *cresc.* *mf* *cresc.* *M*

284 2 3 4 *f*

294 1 *pizz.* *mf* 1 *mf* *N*

304 *f* 3

316 *arco* *mf* *f* *mf* *mp*

325 1 *p* *mf* *mp*

336 *p* 10 *V.S.*

10. **P** subito più mosso $\text{♩} = 96$
off sempre

Vn. II

