

OVERTURE TO  
THE VIRGINIAN VOYAGE

Doublebass

WALTER ROSS

DOUBLEBASS

OVERTURE TO THE VIRGINIAN VOYAGE

Walter Ross

Festivo  $\text{♩} = 108$

9 10 10 20 1 A horns  
tuba 30 3 'celli pizz. 50 mf

2 40 5 solo cello 1 pizz. mf

B 4 pizz. 1 60 2 pizz. mf

2 pizz. 2 70 1 pizz. mp mf

80 1 C 6 mf

pizz. 90 1 100 8 1 pizz. mp mf

pizz. 110 2 1 mf

120 4 E Animato  $\text{♩} = 108$  (l'istesso tempo) 4 130 8 str. pizz. 140 10

150 pizz. mf F 160 2 3 4 5 6

7 170 1 G 'celli 9 180 7 'celli 3 190 10

2.

200 10 210 10 220 brass 4 pizz. 2 3 4 5 6 7 8 9

230

240 2 3 4 5 6 7 8 9 2

I 3 250 10 260 10 270 6 brass 4 280 trps. 10 290 10 300 6 ff brass 4

310 3 timpani 2 K arco 1 320 10 330 7 L non vib. pp

340 3

350 6 muted brass 4 360 5 poco accel. 3 timp. M = 120 370 8 380 10 390 10

400 10 410 5 'celli N pizz. 420 mf

430 6 1 pizz. mf 2

440 2 pizz. 7 450 2 7 460 1 arco rit. poco a poco al 7

P Tempo 1° = 108 pizz. 4 480 4 pizz. mf



3.

Handwritten musical score for a string quartet, measures 490-620. The score is written on ten staves, each with a different clef (bass, alto, and tenor). The notation includes various musical symbols such as notes, rests, and dynamic markings. Key markings include:

- Measures 490-500: Bass clef, 2, 10, 1, pizz. (pizzicato), f (forte).
- Measures 510-520: Bass clef, 2, 4 (pizz.), 520.
- Measures 530-540: Bass clef, 4, R Vns. (Violins), 530, 9, arco (arco), 540, 2 pizz., 2, 3, 4.
- Measures 550-560: Bass clef, S (Soprano), 550, 4, T pizz. (Tenor), 4, mf (mezzo-forte).
- Measures 570-580: Bass clef, 570, U (Unison), 7, 580, 6, V pizz. (Violins), 2, 3, 4, 5, 6, 7, 8.
- Measures 590-600: Bass clef, 590, 2, 3, 4, 5, 6, 7, 8, 9, 10, mf, cresc. (crescendo).
- Measures 610-620: Bass clef, 610, W (Woodwinds), 6, 620, 2, timp (timpani), V.S. (Violoncello).

4. **X** arco

5

**630**

9

**Y**

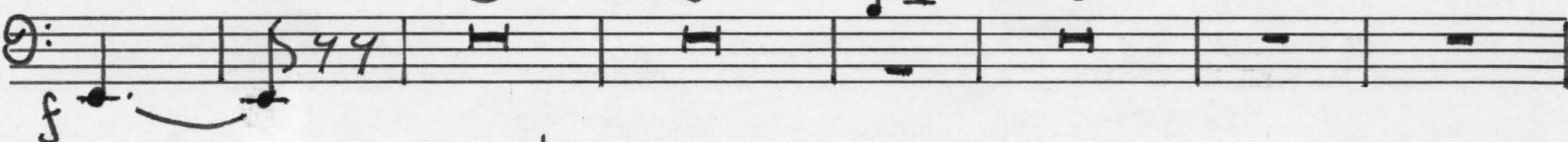
horns  
trb.

**640**

3

str.

10.10.



pizz.

3

**Z** str.

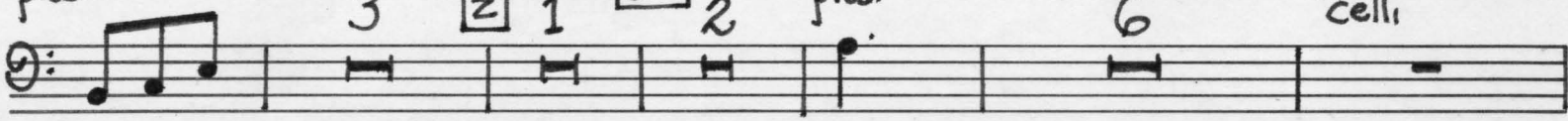
**650**

2

pizz.

6

'cell.



**660** f  
arco



**Aa**

6

